

IN YOUR COMMUNITY



WECU is committed to supporting our local community. Visit us at one of these upcoming WECU sponsored events.

Sedro-Woolley Loggerdeo

June 30 - July 4

Downtown Sounds

July 12, 19, 26 & August 2

Raspberry Festival

July 14-15

Mount Vernon Riverwalk Concerts

July 13 & August 17

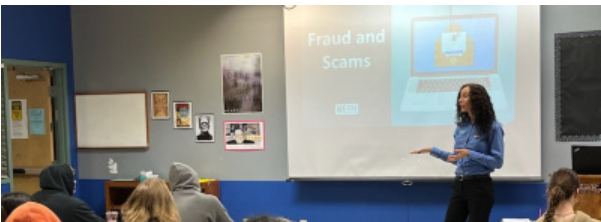
WECU Family Night at the Bellingham Bells

July 29

WECU Day at the NW Washington Fair

August 11

See full calendar at wecu.com/events



Financial Literacy

WECU is committed to providing financial literacy resources for our members and those in our community. This year our team has provided 35 lessons to more than 800 students.



Board Elections

WECU is committed to overcoming the structural barriers and inequities in the financial sector by developing a more diverse, inclusive, and equitable Board and Supervisory Committee.

Are you a member of WECU with a passion for community-focused leadership? Do you believe in the mission of WECU to serve others, do what's right, and think differently? If you are interested in learning more about the positions and how to apply, please visit wecu.com/board-governance.

Teacher Appreciation Week

In May, WECU celebrated Teacher Appreciation Week by inviting the community to nominate great local teachers. Three teachers were selected from the nominations for \$500 classroom sponsorships. Congratulations to Jensen Bertrand (Irene Reither Elementary), Marissa Marceau (Geneva Elementary), and Sr. Freddy Berroteran (Lynden Christian Elementary).

MAA Rights

Your account rights and responsibilities are governed by the Membership and Account Agreement. Your member rights are set forth in the Credit Union Bylaws and Policies. These documents are available at the Credit Union upon request.

Holiday Closures

Independence Day: Tuesday, July 4

Labor Day: Monday, September 4



BANKING FOR PEOPLE. NOT-FOR- PROFIT.

SUMMER 2023 NEWSLETTER

A NOTE FROM JENNIFER



**WATCH THE VIDEO MESSAGE
AT [WECU.COM/MIDYEAR](https://www.wecu.com/midyear)**

Dear WECU Member,

We are now more than halfway through the year, and I hope you and your family are enjoying your summer in this beautiful place we call home.

At WECU, our mission is to make a meaningful difference in the lives of our members and the communities we serve, and we do so with strength and passion. WECU is healthy, thriving and committed to being here for you.

SAFETY AND SOUNDNESS

A part of serving our membership is providing the peace of mind that comes with knowing your money is safe. WECU is well-managed, well-capitalized, and healthy. Earlier this year, WECU was recognized as the healthiest credit union in Washington State by Glatt Consulting and rated the top performing credit union in Washington State and 19th in the country by S&P Global Intelligence. We are proud of these distinctions and continue to focus on exceptional financial and risk management practices. In addition to this, WECU's website and online banking employ up-to-date industry-standard security controls. We constantly assess our products and services to ensure that we maintain a high level of security, because safeguarding your information is our priority.

SKAGIT EXPANSION

At WECU, our members' voices matter. We listen, learn, and use member feedback to shape our strategies, products, services, and community impact efforts. Growth is vital to our long-term sustainability and based on member feedback, we were thrilled to open our first financial center outside of Whatcom County in April! After more than 85 years with a physical presence in Whatcom County, we are excited to now serve over 7,000 members who live in Skagit County with a new financial center in Mount Vernon.

This expansion makes WECU more accessible to those who live in Skagit County and will allow us to make an even more meaningful difference in this community. As a credit union, we are uniquely positioned to help Whatcom and Skagit County members achieve financial stability and wellness in a compassionate and inclusive way, and we are looking forward to doing so.

FINANCIAL PRODUCT DEVELOPMENT:

Through our member listening efforts and market research, we continue to enhance and develop competitive products and financial tools that improve lives and fit into the different phases of our members' financial journeys.

FIRST STEP

In 2020, WECU introduced First Step Accounts. These checking and savings accounts, built for our youngest members, come with attractive features, benefits, and access to online financial education. This year, we debuted improvements for these accounts, including better interest rates and features.

PURCHASE PROMISE

We also introduced our best mortgage offer yet the WECU Purchase Promise. Members who choose to finance their home through WECU get our top-quality service, and they also receive \$500 off closing costs, a \$500 close-on-time guarantee, and \$500 off closing costs for a future refinance.

MAKING A DIFFERENCE IN OUR COMMUNITY:

As a local financial cooperative, WECU is our community. Therefore, it is in our DNA to invest in and make a meaningful difference in our community. In fact, one of our guiding principles is to be socially responsible and community-minded in all that we do.

TEAM WECU

WECU's employee volunteer program, Team WECU, has been busy and active again this year. Our employees have already volunteered more than 8 times with nonprofits such as Bellingham Childcare and Early Learning Center, Opportunity Council, and WMBC. We hope that you will say "hello" when you see us out in the community.

CHARITABLE GIVING

We continue to give generously to nonprofits and community groups. In February, our WECU team members raised over \$106,000 for the United Way of Whatcom County in our annual fundraiser. We also continue to donate through our Community Builder program, branch drives, and charitable sponsorships. 2023 is on track to be the most significant year of giving in WECU's history! None of this would be possible without your membership. So, thank you!

YOU MAKE WECU POSSIBLE

In closing, thank you for your membership. Your trust in WECU allows us to support the community and provide meaningful products and services to you and your fellow members.

Thank you for choosing to bank with a credit union that puts people and their financial health over profit. It is our privilege to serve you, and we look forward to doing so for generations to come.

From myself, WECU's employees, and all your fellow members, thank you for your membership!

Jennifer Kutcher
President/CEO